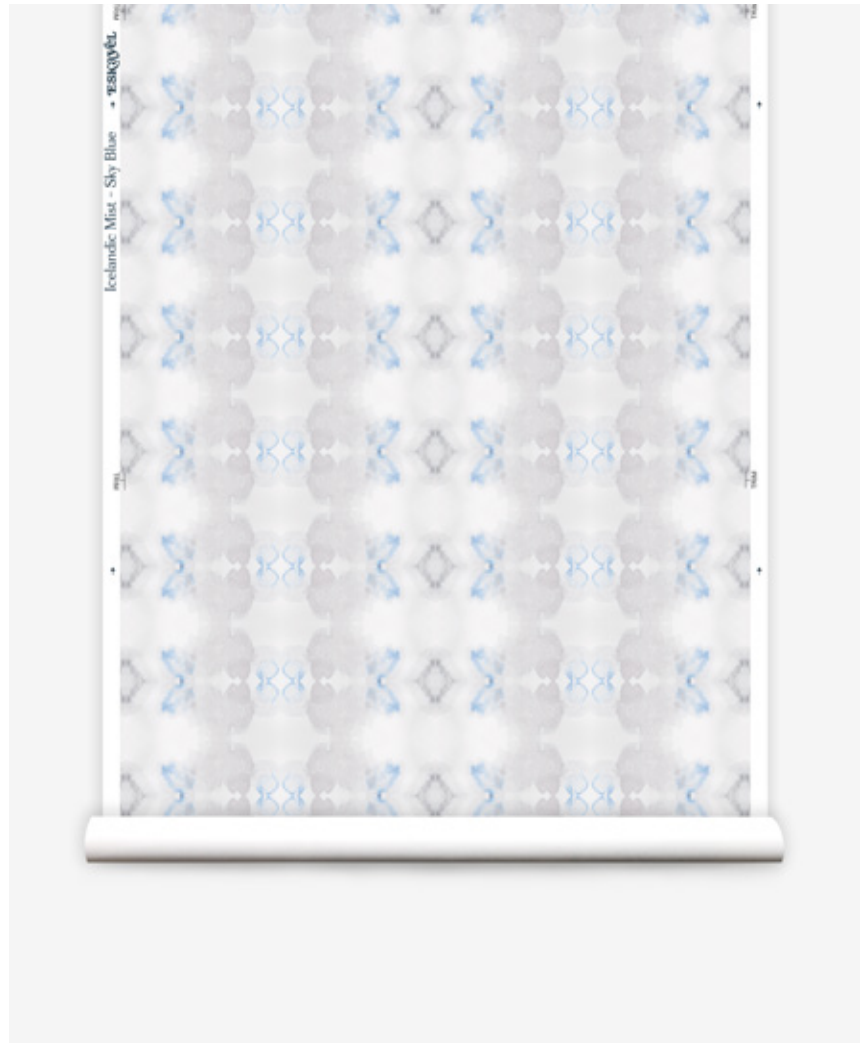


Icelandic Mist – Sky Blue Wallpaper

This pattern is printed on Classic wallpaper. All production is done per order and takes up to 6 weeks to ship. Please be sure to order a sample before purchasing rolls.

Classic wallpaper is a traditional clay coated paper manufactured with responsibly-sourced fiber by suppliers who adhere to one of the globally recognized forestry or chain of custody programs.



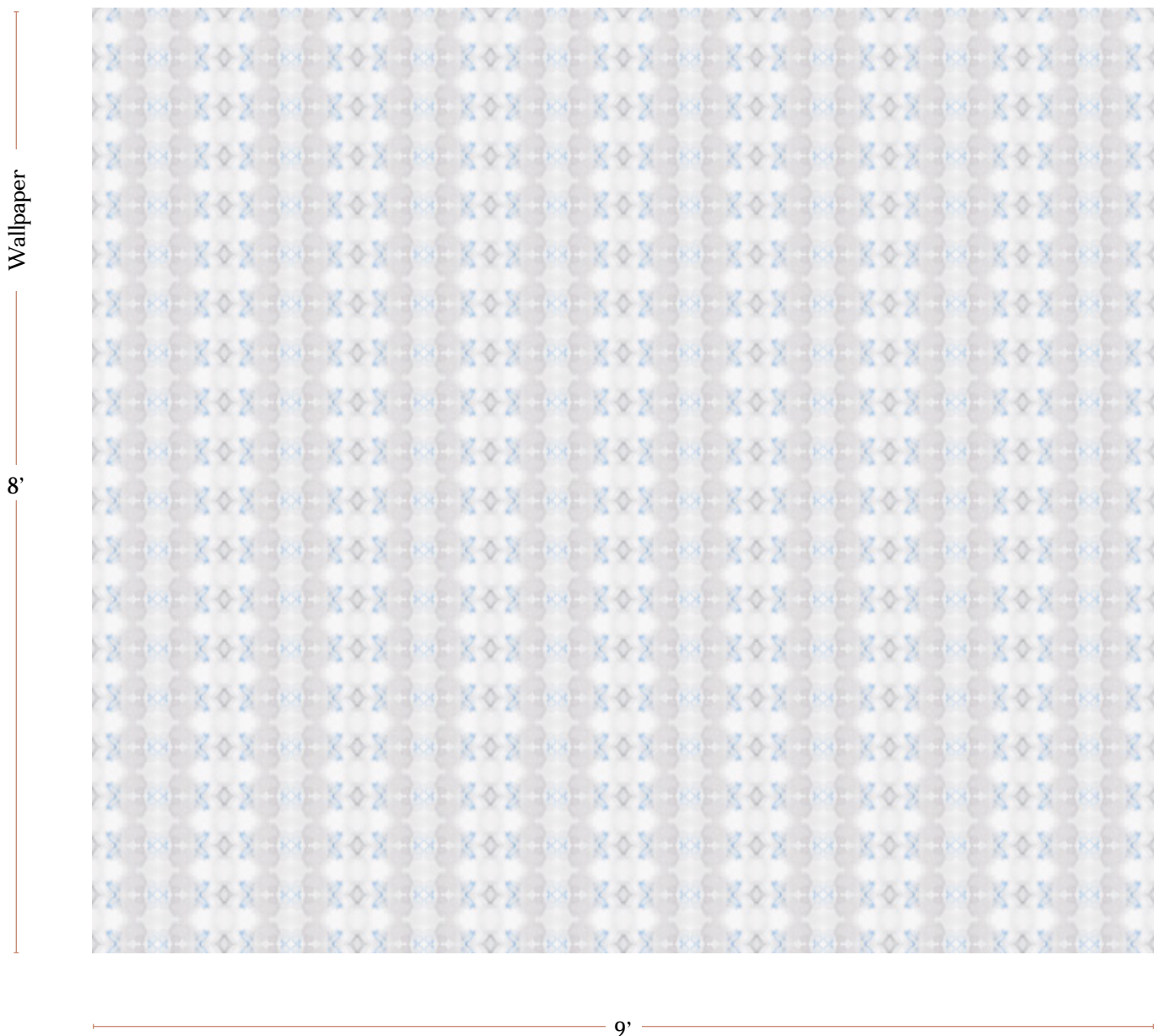
Vertical Repeat	5"
Horizontal Repeat	13.5"
Roll Width	27"
Roll Length	15' when ordered in multiples printed continuously as double, triple, or quadruple rolls

Pricing	Sold by the roll
Selvage	1" paper comes untrimmed
Sample Size	8.5" x 11" **If you are unsure of color please order a sample before purchasing.
Large Sample Size	27" x 27"

Wallpaper Type	Classic
Material	Traditional clay coated paper
Print Method	Digital; Latex water-based ink system
Lead Time	4-7 weeks **Rush Service subject to availability. Rush fee does not include expedited shipping.

Care	Gently wipe clean with a non-abrasive sponge or cloth with mild soap and water. We always suggest testing your cleaning method in a discreet spot on the wall before implementing in a large area. Do not use commercial cleaners or scrub.
Fire Rating	Class A (ASTM E84)
Color & Scale	We always strive for color accuracy but please note that colors shown on the website are a representation only. Please refer to the actual product sample. **Also due to varying ink/print systems wallpapers and fabrics of the same pattern are not always an exact match in color or scale.
Made In	USA

8' tall x 9' long wall
pictured below
in Icelandic Mist —
Sky Blue Wallpaper



Installation Guide

How to Measure the Amount of Paper to Order

**We always recommend confirming quantities with your wallpaper installer prior to ordering.

We recommend measuring with a yardstick or steel tape measure. Make your measurements in feet and round off to the next half foot or foot. Measure the wall height from the floor to the ceiling, excluding any baseboards or moldings. Then measure the length of the wall without deducting for windows or doors (this will leave you extra wallpaper in case you may need it). Multiply the two measurements to find the surface area of the wall.

Single rolls of our Classic paper are 15 feet long and 27 inches wide. 1 roll covers about 30 square feet. To find the number of rolls needed to cover your wall, multiply the height and the width of the wall by rounding up each length to the nearest foot. Then divide by 30.

Example: For a wall that is 10 feet 6 inches high by 9 feet 4 inches long. Round up and multiply 11 feet by 10 feet to get 110 square feet. Divide 110 by 30 and you will get 3.6. In this case you will need 5 rolls.

If the number divides out to be .5 or above, you will need to add one more roll on to be safe. If you were to get 3.4, 4 rolls would be enough, but if you get 3.5 to 4.4, you will need 5 rolls.

Please feel free to contact us anytime for assistance in finalizing your calculation.

Installation Guide

Classic Wallpaper Installation Guide

Eskayel highly recommends consultation with a professional paperhanger prior to installation.

These instructions are for our CLASSIC wallpaper only.

Wall Preparation

Wall should be prepped to a smooth, clean, and dry surface prior to installation.

Wallcovering will not hide flaws such as: nail holes, bumps, or dirt.

Primer sealer should be used on unpainted drywall. Use acrylic wallcovering primers: Professional Ultra Primer (PRO-977), Golden Harvest White Bite, or Allpro Ultra Prep 685. Priming provides a sound surface that wallcovering will adhere to. It is recommended to strip down previous layer(s) if wallcovering. The Wallcovering may seem to be firmly adhered to the wall, but the addition of another layer can cause adhesion failure.

Prime over glossy paint with one of the above mentioned primers.

Paste Information

- Clear adhesives such as Professional Ultra Premium Heavy Duty Clear Strippable (PRO-880), Golden Harvest GH-34 Clear Strippable, and Allpro Pro-Duty 3400 provide good adhesion and allow for easier stripping when the wall covering is to be removed or replaced.
- Clay adhesives such as Professional Extra Strength (PRO-732), Professional Clay Strippable (PRO-774), Golden Harvest GH-40, Allpro Extra Strength Vinyl 600m, and Allpro Clay Strippable 661 have also been shown to be effective both during installation and the removal of these wallcovering materials.
- Pastes such as Professional Heavy Duty Clear PRO-838 or Allpro Clear Hang 61- have a more aggressive adhesion and should be used for more permanent applications.
- Vinyl over vinyl pastes tend to dry too quickly on these products and are not recommended.
- Apply a coat of the adhesive using a 1/2" nap paint roller. Book for 10 minutes.

Hanging Information

- Do not use tape on imaged surface.
- Align top and adjoining edges. Smooth panels into place with a smoothing brush, starting at the center of the panel working towards the edges.
- Use a plastic smoother to push air pockets to the edges.
- The low wet expansion of these products allows double cutting at the seams.
- Remove any and all excess paste from the paper using a lightly damp rag or sponge. Do not use a fully damp sponge as slight running may occur in heavy coverage areas. If any paste is left to dry, flaking may occur which can lead to spots from ink being pulled from the paper.
- Overlapping the seams is not recommended.