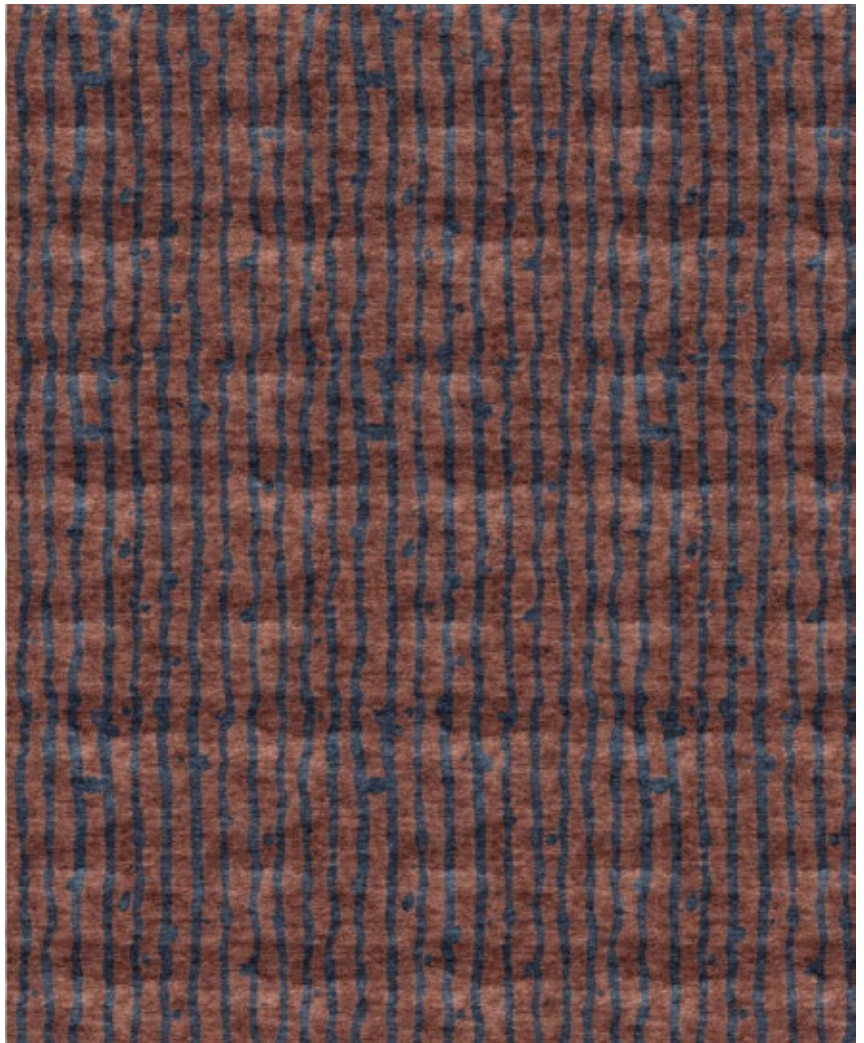


Drippy Stripe – Isthmus Rug

This luxurious rug is hand knotted in Nepal using a Tibetan Crossweave.

Rugs are made to order and can be custom ordered in various sizes. Custom rugs take approximately 3 - 5 months depending on size. Samples are available for loan in the quality and material shown.

Size, quality, material and color can be customized. Our wool + silk hand knotted rugs are produced in Nepal in various knots and weaves. Please contact us and we will work with you to create custom rugs that fit the needs of your project.



| | |
|--------------------|---|
| Pattern | Drippy Stripe – Isthmus |
| Material | Available in Wool, Silk, Merino Wool, and Blends . AS SHOWN: 100% Merino Wool |
| Weave/ Pile Height | Tibetan Crossweave (6mm) |
| Knot Count | 100 Knot Count |

| | |
|-------------|--|
| Pricing | Sold by the square foot |
| Sample Size | 1.5' x 1.5' **Rug samples are available for loan to help in your rug selection. |
| Variations | Rugs are a hand made product and so variation is inevitable. Please expect rugs to match samples not renderings. Be sure to read our Terms and Conditions before ordering. |

| | |
|--------------|--|
| Ordering | To view the current collection of rugs please contact us to request a sample or to set up an appointment at our showroom in Brooklyn. To view In Stock Rugs please contact us or visit the in stock page on our website. |
| To The Trade | We offer a trade discount to interior designers and architects. Please contact us for a quote. |
| Lead Time | Custom rugs take approximately 3 - 5 months depending on size and quality. **Pricing does not include shipping, delivery, install or rug pad. These charges will be quoted separately. |

| | |
|---------------|---|
| Care | Shedding is normal and will diminish with regular vacuuming. Use a suction vacuum only. Do not use a vacuum with a beater bar/ brush / Loose fibers are common, clip with scissors / Any creases in rugs should disappear in a week or two / Keep away from excessive moisture / Rugs in direct sunlight will fade over time, rotate your rug / Blot spills immediately with a white cloth / Professional rug cleaning recommended as needed / Harsh chemicals may damage or fade rug / Use rug protectors under heavy furniture / Indoor Use only. |
| Customization | Size, quality, material and color can be customized |
| Color & Scale | We always strive for color accuracy but please note that colors shown on the website are a representation only. Please refer to the actual product sample. |
| Made In | Nepal |

8' x 10' Rug
pictured below
in Drippy Stripe –
Isthmus

