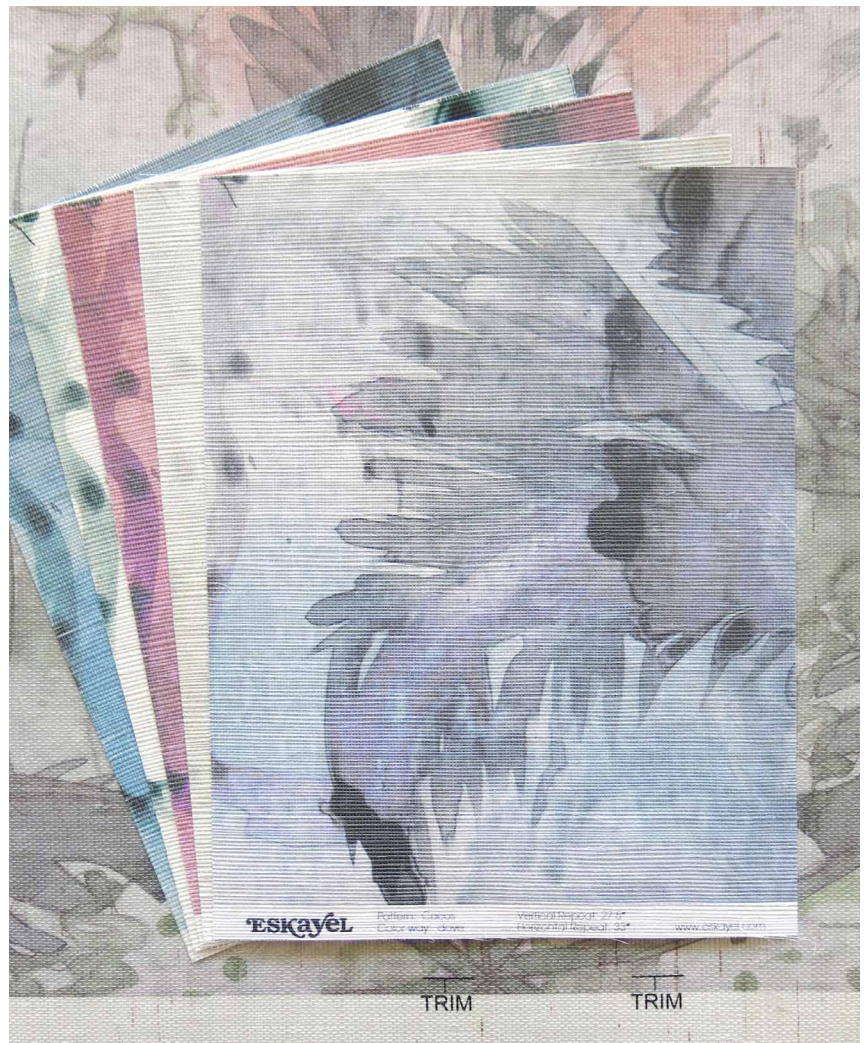




## Cocos – Dove Grasscloth

This pattern is printed on Grasscloth wallcovering. All production is done per order and takes up to 6 weeks to ship. Please be sure to order a sample before purchasing rolls.

Grasscloth wallcovering has a textural, organic feel. Hand woven earth-friendly sisal is backed with chemical-free paper and printed with water-based latex inks.



Vertical Repeat	27.5"
Horizontal Repeat	33"
Roll Width	33"
Roll Length	15' Printed continuously up to a triple roll

Pricing	Sold by the roll
Selvage	1" paper comes untrimmed
Sample Size	7" x 10" **If you are unsure of color please order a sample before purchasing.
Large Sample Size	33" x 24"

Wallpaper Type	Grasscloth
Material	Sisal grasscloth backed with chemical free paper
Print Method	Digital latex water-based ink
Lead Time	4-7 weeks **Rush Service subject to availability. Rush fee does not include expedited shipping.

Care	Vacuum only - do not dampen
Fire Rating	Class A (ASTM E84)
Color & Scale	We always strive for color accuracy but please note that colors shown on the website are a representation only. Please refer to the actual product sample. **Also due to varying ink/print systems wallpapers and fabrics of the same pattern are not always an exact match in color or scale.
Made In	USA

8' tall x 9' long wall  
pictured below  
in Cocos —  
Dove Grasscloth



## Installation Guide

### How to Measure the Amount of Paper to Order

\*\*We always recommend confirming quantities with your wallpaper installer prior to ordering.

We recommend measuring with a yardstick or steel tape measure. Make your measurements in feet and round off to the next half foot or foot. Measure the wall height from the floor to the ceiling, excluding any baseboards or moldings. Then measure the length of the wall without deducting for windows or doors (this will leave you extra wallpaper in case you may need it). Multiply the two measurements to find the surface area of the wall.

Single rolls of this paper are 15 feet long and 33 inches wide. 1 roll covers about 40 square feet. To find the number of rolls needed to cover your wall, multiply the height and the width of the wall by rounding up each length to the nearest foot. Then divide by 40.

Example: For a wall that is 10 feet 6 inches high by 14 feet 4 inches long. Round up and multiply 11 feet by 15 feet to get 165 square feet. Divide 165 by 40 and you will get 4.125. In this case you will need 5 rolls.

If the number divides out to be .5 or above, you will need to add one more roll to be safe. If you were to get 2.4, 3 rolls would be enough, but if you get 2.5 to 3.4, you will need 4 rolls.

Please feel free to contact us anytime for assistance in finalizing your calculation.

## Installation Guide

### Grasscloth Wallcovering Installation Guide

Eskayel highly recommends consultation with a professional paperhanger prior to installation.

These instructions are for our GRASSCLOTH wallcovering only.

\*Please note, this product is handmade and woven with natural fibers that give the finished product a certain unevenness.

### Wall Preparation

Remove all old wallpaper and repair damaged areas. All walls must be smooth, clean, and free of mildew and grease stains. If necessary apply a stain killing primer. Be sure to wash newly plastered walls with a zinc sulfate solution. Follow up with primer sealer such as Roman's Ultra Premium Pro 977. On all drywall we recommend using a pigmented wallcovering primer/sealer such as Shields Primer/Sealer.

### Trim and Hang

- Draw a vertical line from ceiling to floor by using a plumb line or straight edge with level. This will be your guide for positioning one edge of the first strip. Cut the strip to the height of the wall, allowing an extra 2" on each end for trimming. Do not use tape on imaged surface. Trim the selvage at the trim marks.
- Apply adhesive evenly to the back of the strip, being careful not to get adhesive on the face of the material. Paste only one strip at a time. We recommend a cellulose paste or a premixed clear adhesive such as Roman's Ultra Premium Clear Pro 880 for best results.
- Book by folding each end of the strip toward the middle, pasted sides together, aligning the edges carefully so they do not dry out. Roll the folded strip as you would a loose newspaper, again being careful to keep the edges aligned. Let folded, rolled strip to "rest" for 3 min.
- Bring to the wall and hang, Carefully smooth all air pockets, wrinkles or excess paste from the center of the strip to the edges. Trim excess at floor and ceiling using a sharp utility knife. Repeat this procedure with the next strip, sliding it into position with the edge butted up against the preceding strip. Do not overlap seams.

### Notes

- Do not use seam roller as this can discolor the surface.
- Do not allow material to become too wet (because of how the woven material adheres to the backing paper, prolonged soaking can soften the adhesive and cause the grass to separate from the back paper.)
- Do not allow adhesive or water on the wallcovering surface as it will cause staining or discoloration to the product.
- THIS IS NOT A WASHABLE WALLCOVERING. USE VACUUM ONLY TO CLEAN SURFACE.