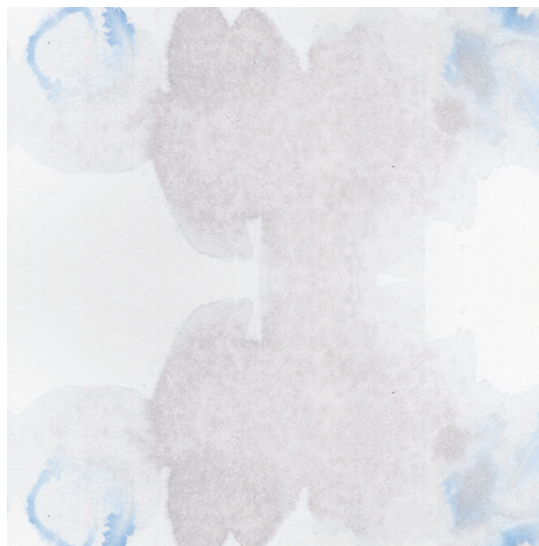
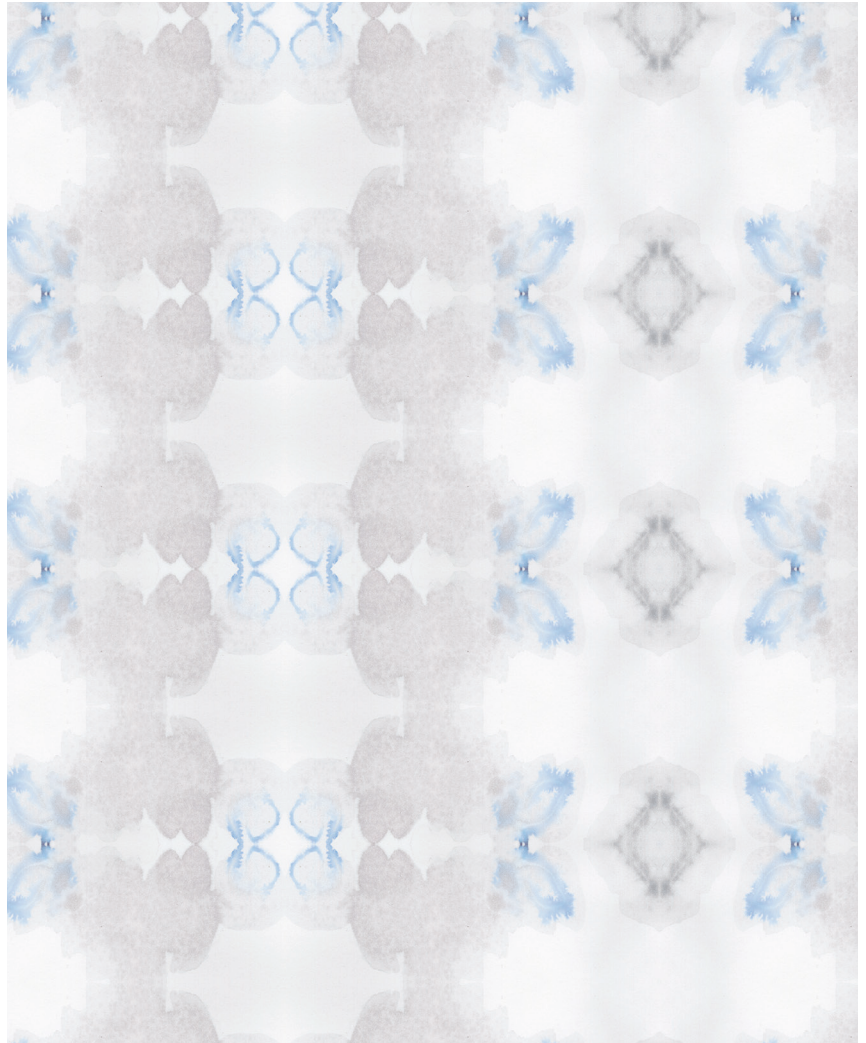


Icelandic Mist - Sky Blue Fabric

This pattern is printed by the yard on an option of four fabric grounds. All production is done per order and takes up to 5 weeks to ship. Please be sure to order a sample before purchasing yardage.

Fabric is printed to order locally in the Northeast. Our 100% linen comes in small batches from Belgium. All standard fabric options are 54" wide. There is a one yard minimum order.



Vertical Repeat	4.86"
Horizontal Repeat	13.25"
Fabric Width	54" (137.2 cm)
Fabric Length	by the yard (91.5 cm)

Pricing	Sold by the yard; Price varies based on fabric ground
Selvage	1"
Sample Size	8.5" x 11" **If you are unsure of color or fabric choice please order a sample before purchasing.
Large Sample Size	25" x 25"

Fabric Ground Options	50/50 linen cotton blend 100% oyster linen 100% heavyweight linen 100% organic cotton denim
Print Method	Digital, pigment ink
Delivery	4-6 weeks **Rush Service subject to availability. Rush fee does not include expedited shipping.

Care	Dry clean only
Color & Scale	We always strive for color accuracy but please note that colors shown on the website are a representation only. Please refer to the actual product sample. **Also due to varying ink/print systems wallpapers and fabrics of the same pattern are not always an exact match in color or scale.
Made In	USA

54" wide x 1 yard
pictured below
in Icelandic Mist —
Sky Blue Fabric

