

YAYA WALLPAPER

Material	clay coated FSC certified paper substrate
Repeat	13.5" horizontal 20" vertical
Match	straight
Roll Width	27" printed width trimmed 30" untrimmed with 1" selvedge and 1/4" bleed
Roll Length	5 yards when ordered in multiples, rolls are printed continuously up to a quadruple roll (20 yards)
Lead Time	printed to order 4-6 weeks with rush services available upon request and availability
Origin	milled and printed in the USA
Fire Rating	class A (ASTM E84)
Notes	priced by the roll increment custom color and scale available please visit our website for further information

REPEATS PICTURED ↓



BRISA



GRAPEFRUIT



HUSK



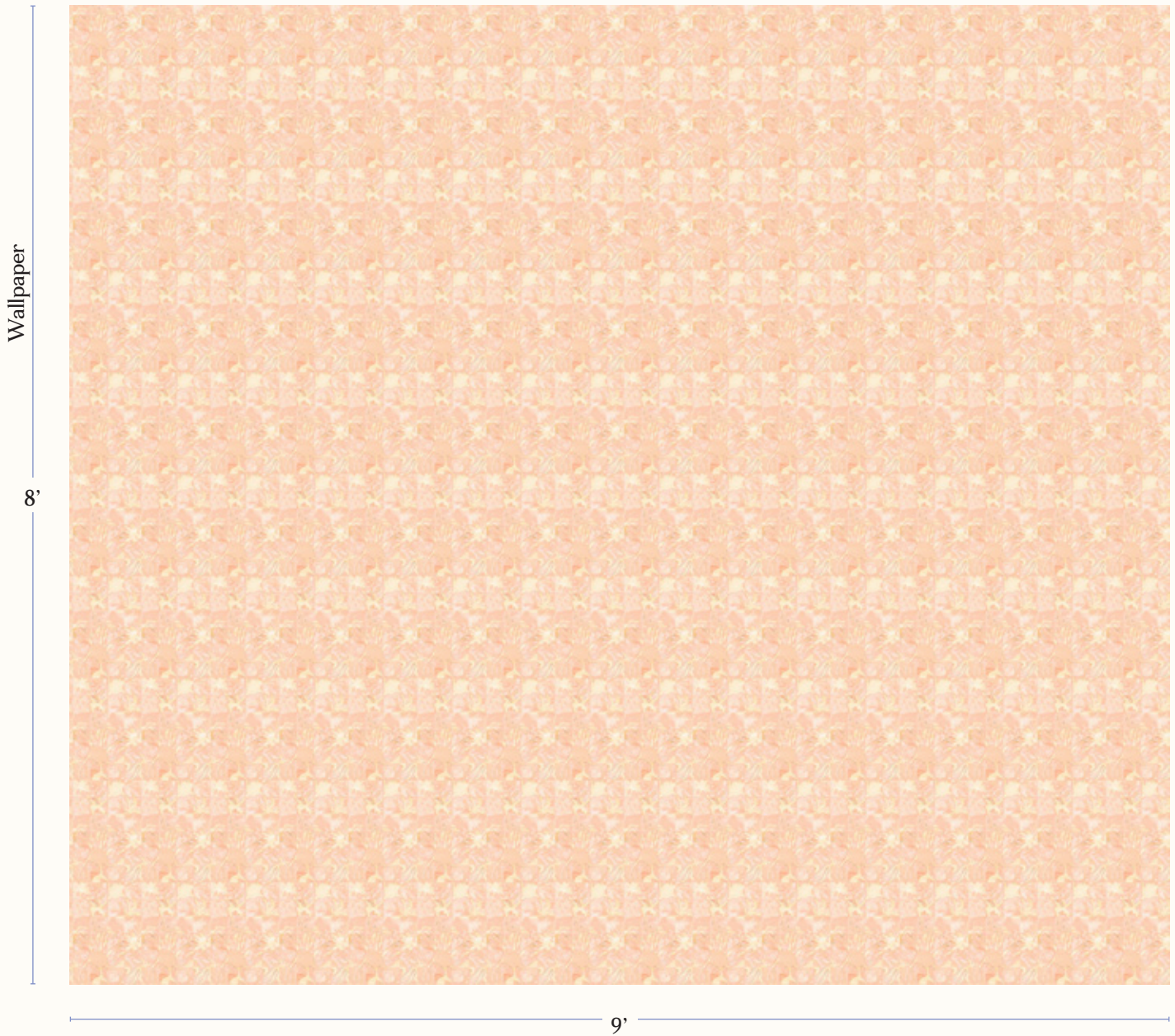
LIMEADE



PUNCH

YAYA WALLPAPER IN GRAPEFRUIT

8' tall x 9' wide wall
pictured below



INSTALLATION GUIDE

Classic Wallpaper Installation Guide

Eskayel highly recommends consultation with a professional paperhanger prior to installation. These instructions are for our CLASSIC wallpaper only.

Wall Preparation

- Wall should be prepped to a smooth, clean, and dry surface prior to installation.
- Wallcovering will not hide flaws such as: nail holes, bumps, or dirt.
- Primer sealer should be used on unpainted drywall. Use acrylic wallcovering primers: Professional Ultra Primer (PRO-977), Golden Harvest White Bite, or Allpro Ultra Prep 685. Priming provides a sound surface that wallcovering will adhere to. It is recommended to strip down previous layer(s) if wallcovering. The wallcovering may seem to be firmly adhered to the wall, but the addition of another layer can cause adhesion failure.
- Prime over glossy paint with one of the above mentioned primers.

Paste Information

- Clear adhesives such as Professional Ultra Premium Heavy Duty Clear Strippable (PRO-880), Golden Harvest GH-34 Clear Strippable, and Allpro Pro-Duty 3400 provide good adhesion and allow for easier stripping when the wall covering is to be removed or replaced.
- Clay adhesives such as Professional Extra Strength (PRO-732), Professional Clay Strippable (PRO-774), Golden Harvest GH-40, Allpro Extra Strength Vinyl 600m, and Allpro Clay Strippable 661 have also been shown to be effective both during installation and the removal of these wallcovering materials.
- Pastes such as Professional Heavy Duty Clear PRO-838 or Allpro Clear Hang 61- have a more aggressive adhesion and should be used for more permanent applications.
- Vinyl over vinyl pastes tend to dry too quickly on these products and are not recommended.
- Apply a coat of the adhesive using a 1/2" nap paint roller. Book for 10 minutes.

Hanging Information

- Do not use tape on imaged surface.
- Align top and adjoining edges. Smooth panels into place with a smoothing brush, starting at the center of the panel working towards the edges.
- Use a plastic smoother to push air pockets to the edges.
- The low wet expansion of these products allows double cutting at the seams.
- Remove any and all excess paste from the paper using a lightly damp rag or sponge. Do not use a fully damp sponge as slight running may occur in heavy coverage areas. If any paste is left to dry, flaking may occur which can lead to spots from ink being pulled from the paper.
- Overlapping the seams is not recommended.