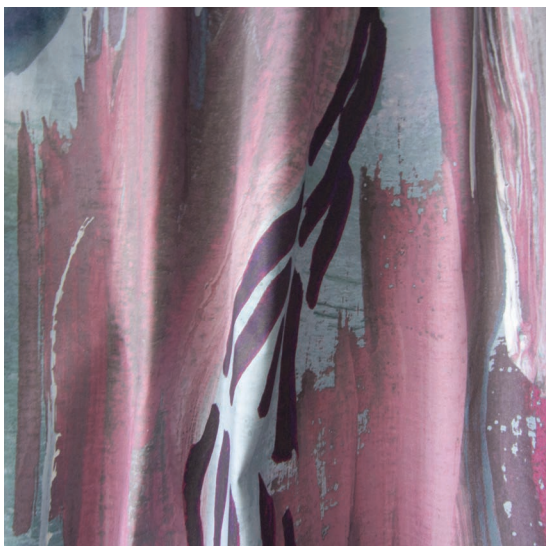


Majorelle – Tesoro Non-Repeating Mural Fabric

This large-scale artwork was translated from an original painting and is available as non-repeating fabric printed on an option of four fabric grounds. All production is done per order and takes up to 5 weeks to ship. Please be sure to order a sample before purchasing custom panels.

Non-repeating mural fabric is great for curtain panels, custom duvets, and upholstery. Panels are 54" wide and sold by the 12.5' or 15' panel, depending on the collection. We will work with you to create the layout that fits the needs of your project. Custom panel lengths can be ordered by the yard through our design studio.

Majorelle - Pausa mural fabric was made in collaboration with Olivia Provey as part of Jamaa Series II.



Mural Fabric	A complete mural is 3 panels wide (AB, CD, EA). Panels repeat horizontally but not vertically.
Mural Artwork	135" wide x 12.5' long
Panel Width	54 inches (137.2 cm)
Panel Length	12.5' panels (381 cm); cut lengths at 12.5'

Pricing	Sold by the yard
Selvage	1"
Sample Size	8.5" x 11"; shows a section of the artwork at full scale
Large Sample Size	25" X 25"; shows a section of the artwork at full scale

Fabric Ground Options	50/50 linen cotton blend 100% oyster linen 100% heavyweight linen 100% organic cotton denim
Print Method	Digital, pigment ink
Lead Time	4-6 weeks **Rush Service subject to availability. Rush fee does not include expedited shipping.

Care	Dry clean only
Color & Scale	We always strive for color accuracy but please note that colors shown on the website are a representation only. Please refer to the actual product sample. **Also due to varying ink/print systems wallpapers and fabrics of the same pattern are not always an exact match in color or scale.
Made In	USA

54" x 12.5' long panels
pictured below
in Majorelle – Tesoro
Non-Repeating Mural Fabric

Panel AB

Panel CD

Panel EA

